

May
2013

Rhodes Vet Clinic

Volume 3
Issue 5

Newsletter

Rhodes Veterinary Clinic
74 Gellibrand Street
COLAC 3250
P: 03 5232 2111
F: 03 5231 5892
E: rhodesvet-dsl@pacific.net.au

Veterinarians:

Dr Michael Rhodes
Dr Cate Watt

Practice Manager:

Cindy Schoell

Nurses:

Kirsty Paton
Lauren Price

Simpson:

Christine Burgin
Kim Henderson

We provide:

- Surgery & Medicine for both small and large animals
- Soft Tissue & Orthopaedic Surgery
- Dentistry
- X-ray & Ultrasound
- In House Blood Testing
- Nutrition & Prescription Diets
- Microchip Identification



Rat Bait Poisoning

Dogs love the taste of rat poison.

Products such as Ratsak, Racumin, Tomcat and Talon are highly poisonous! These poisons work by inactivating Vitamin K which is essential for blood clotting.

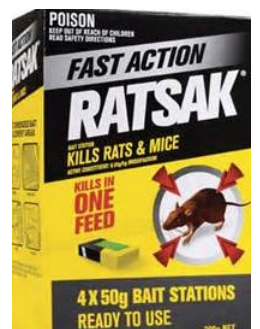
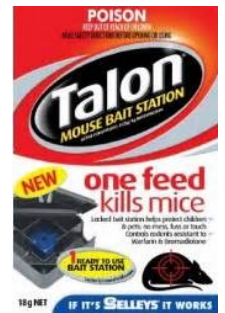
Symptoms include bleeding from anywhere including the nose, gums, bladder bowel and lungs. Your pet will have pale gums and can be off its food. The dog will be lethargic. These symptoms will take 2 to 5 days to show after your dog has eaten the poison and can be fatal if not rapidly treated.

The poison can continue to be active for up to six weeks in the dog's body.

PROMPT veterinary attention is vital. Treatment includes making the dog vomit as soon as possible, blood transfusions and long term supplementation of Vitamin K.

Cats are sometimes poisoned if they have eaten many baited rats/mice.

There is no such thing as "pet-safe" bait! It is only safe if your pet does not eat it!!



Simpson Office:

Our Simpson Office is open
Monday to Friday
10am to 3pm
P: 03 5594 3257
F: 03 5594 3339

Colac Office:

Our Colac Office is open
Monday to Friday
8am to 6pm
Saturday 9am to 12 noon

We are available 24/7 for emergencies.

Our emergency number is:
5232 2111

Dry Weather Downer Animals

Yep, it is still dry and it is looking a bit tough out there!

I have been called to cattle and sheep that are down and cannot get up for love nor money. They usually have a lamb or calf at foot with an abundance of hay; the quality of which is questionable! They appear bright but very muscle weak.

The cause of the problem is low to no protein.

As you know most ruminant protein comes from bacteria. The bacteria multiply by utilizing the protein, carbohydrate and sugars that make up grass and hay. This bacterial protein is used by the cow to metabolize for its use. With the big dry there is no grass which means the limiting factor for bacterial growth is grass protein. The cow then utilizes its body protein eg muscle to feed the calf /lamb milk. The animal then starts getting very weak until there is not enough protein to maintain muscle or milk and the animal then collapses and is unable to rise.

SO.... Remember to find a protein source to help. These include lucerne hay, vetch, peas, lupins and silage. They should be provided to your animals in addition to good quality hay.

Take advantage of our special aged health check up for our senior pets! Only \$30. Please call the Clinic on 5232 2111 now to book your appointment!

Could your cat be in pain? **limping** **irritability**

\$30 old aged health check

arthrititis

swollen joints **reluctance to play**

sleeping **clingy**

Could your dog be in pain?

Carpiex Loxicom Norbrook

Footy Tipping!

We have just completed Round 5 of the AFL season.

Our current ladder leaders are Alan & Josh sitting on 35 points each. Good work!

